



STUDIO APARTMENT

Type B7

B-06-05 (FLOOR 6) // B-07-05 (FLOOR 7) // B-08-05 (FLOOR 8)

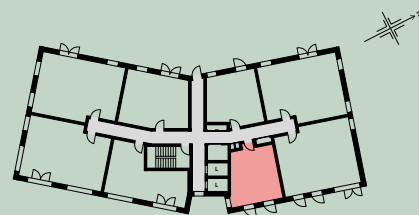
Enjoy high quality open-plan living in this stunning studio apartment that offers comfort and style all-in-one featuring two east-facing juliet balconies.

- 418 Sqft of living space
- Full height windows and underfloor heating
- East-facing juliet balconies
- Siemens and Bosch fitted appliances
- Indoor and outdoor wellbeing and social spaces
- Work and collaboration spaces
- Forthcoming Supermarket and Pharmacy
- Part of the Preston Barracks Regeneration
- Superb transport links to Brighton and the coast



Kitchen // Living // Dining	4.75m x 3.29m	15'7" x 10'9"
Bedroom	4.29m x 2.75m	14'0" x 9'0"
GROSS INTERNAL AREA	38.9 m ²	418 ft ²

FF - Fridge Freezer // WD - Washer Dryer // DW - Dishwasher
W - Wardrobe // ST - Store // L - Lift



1ST - 8TH FLOOR (1ST FLOOR ILLUSTRATED)

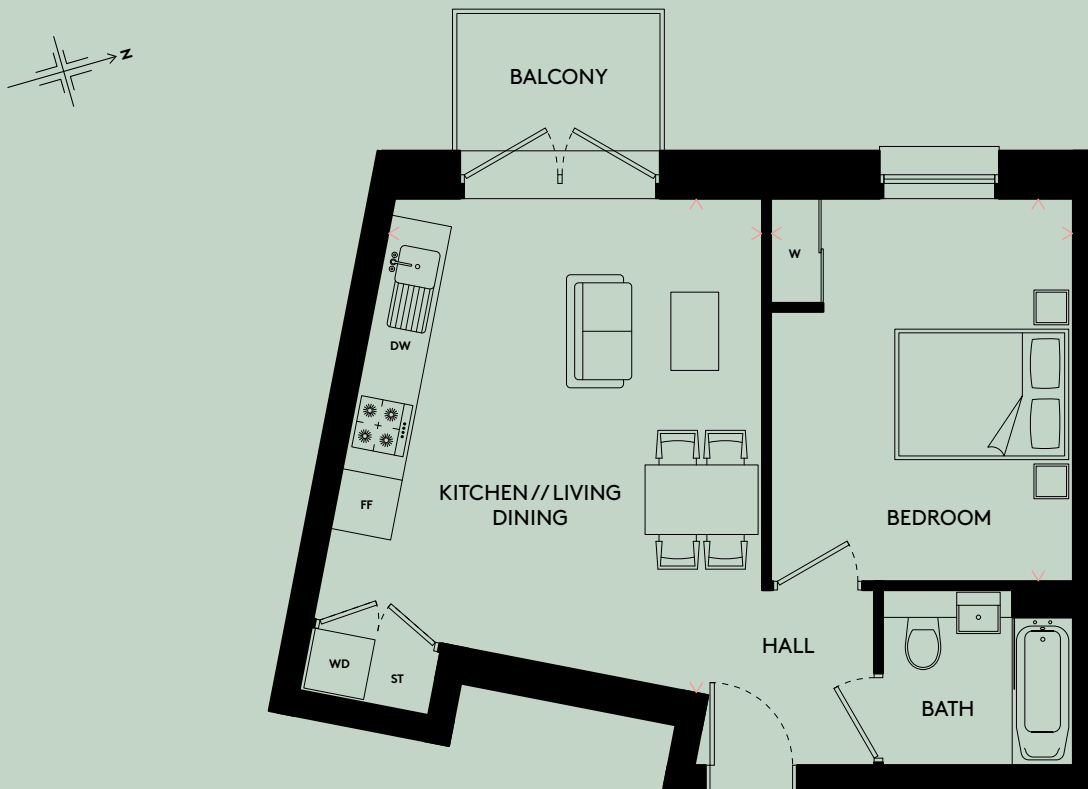
ONE BEDROOM APARTMENT

Type B8

B-05-06 (FLOOR 5) // B-07-06 (FLOOR 7) // B-08-06 (FLOOR 8)

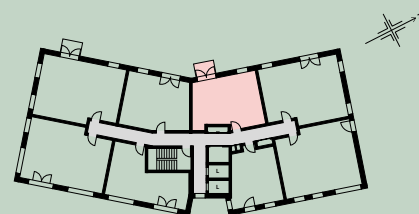
A striking one-bedroom apartment that features an open plan kitchen, living and dining layout that leads onto a private West-facing balcony where you can enjoy evening sunsets.

- 544 Sqft of living space
- Full height windows and underfloor heating
- Private West-facing balcony
- Siemens and Bosch fitted appliances
- Indoor and outdoor wellbeing and social spaces
- Work and collaboration spaces
- Forthcoming Supermarket and Pharmacy
- Part of the Preston Barracks Regeneration
- Superb transport links to Brighton and the coast



Kitchen // Living // Dining	5.72m x 4.21m	18'9" x 13'9"
Bedroom	4.41m x 3.46m	14'5" x 11'4"
GROSS INTERNAL AREA	50.5 m ²	544 ft ²

FF - Fridge Freezer // WD - Washer Dryer // DW - Dishwasher
W - Wardrobe // ST - Store // L - Lift



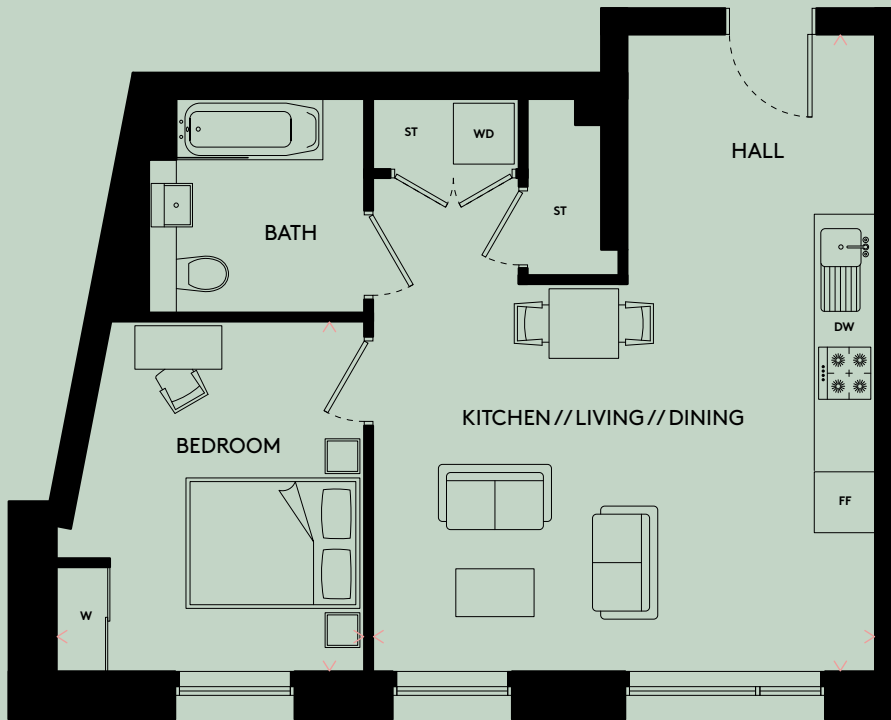
2ND - 8TH FLOOR (2ND FLOOR ILLUSTRATED)

ONE BEDROOM APARTMENT

Type B12
B-09-03 (FLOOR 9)

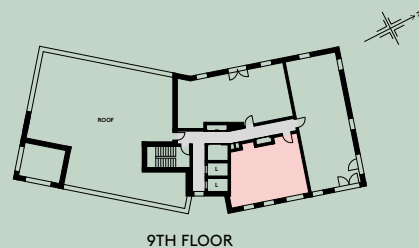
A stylish one-bedroom apartment with modern living in mind. This plot features an open plan kitchen, living and dining layout on the top floor offering far-reaching views.

- 655 Sqft of living space
- Full height windows and underfloor heating
- Elevated views from a top floor apartment
- Siemens and Bosch fitted appliances
- Indoor and outdoor wellbeing and social spaces
- Work and collaboration spaces
- Forthcoming Supermarket and Pharmacy
- Part of the Preston Barracks Regeneration
- Superb transport links to Brighton and the coast



Kitchen // Living // Dining	5.72m x 7.31m	18'9" x 23'11"
Bedroom	4.02m x 3.60m	13'2" x 11'9"
GROSS INTERNAL AREA	60.9 m ²	655 ft ²

FF - Fridge Freezer // WD - Washer Dryer // DW - Dishwasher
W - Wardrobe // ST - Store // L - Lift



9TH FLOOR

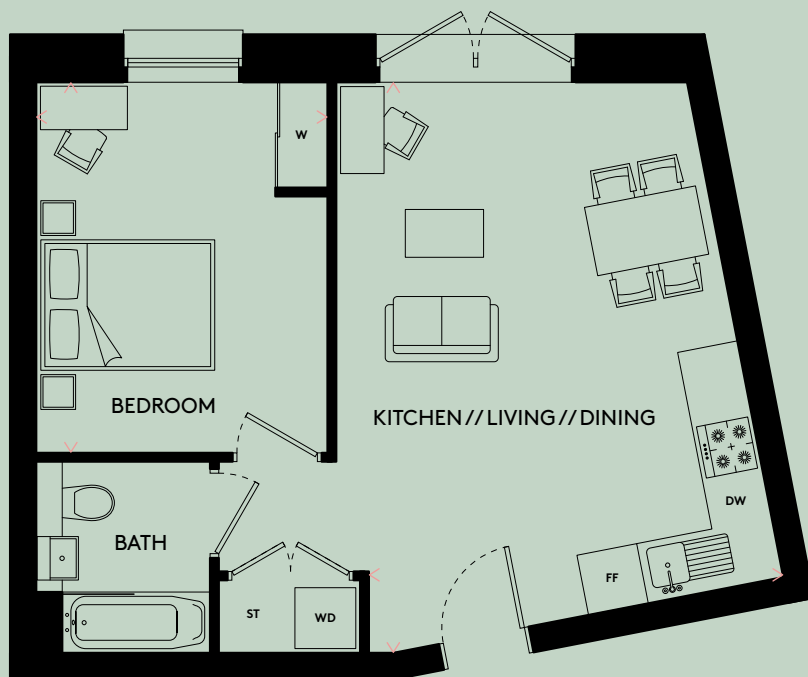
ONE BEDROOM APARTMENT

Type B9

B-04-04 (FLOOR 4) // B-07-04 (FLOOR 7) // B-08-04 (FLOOR 8)

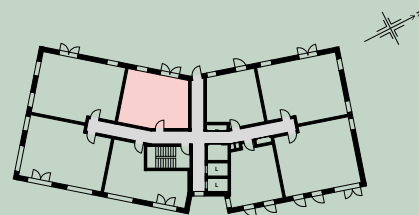
A prestige one-bedroom apartment with an open plan kitchen, living and dining layout featuring a private West-facing juliet balcony to enjoy fresh air, relax and take in the stunning views.

- 545 Sqft of living space
- Full height windows and underfloor heating
- West-facing juliet balcony
- Siemens and Bosch fitted appliances
- Indoor and outdoor wellbeing and social spaces
- Work and collaboration spaces
- Forthcoming Supermarket and Pharmacy
- Part of the Preston Barracks Regeneration
- Superb transport links to Brighton and the coast



Kitchen // Living // Dining	6.52m x 4.74m	21'4" x 15'6"
Bedroom	4.25m x 3.34m	13'11" x 10'11"
GROSS INTERNAL AREA	50.6 m²	545 ft²

FF - Fridge Freezer // WD - Washer Dryer // DW - Dishwasher
W - Wardrobe // ST - Store // L - Lift



1ST - 8TH FLOOR (1ST FLOOR ILLUSTRATED)

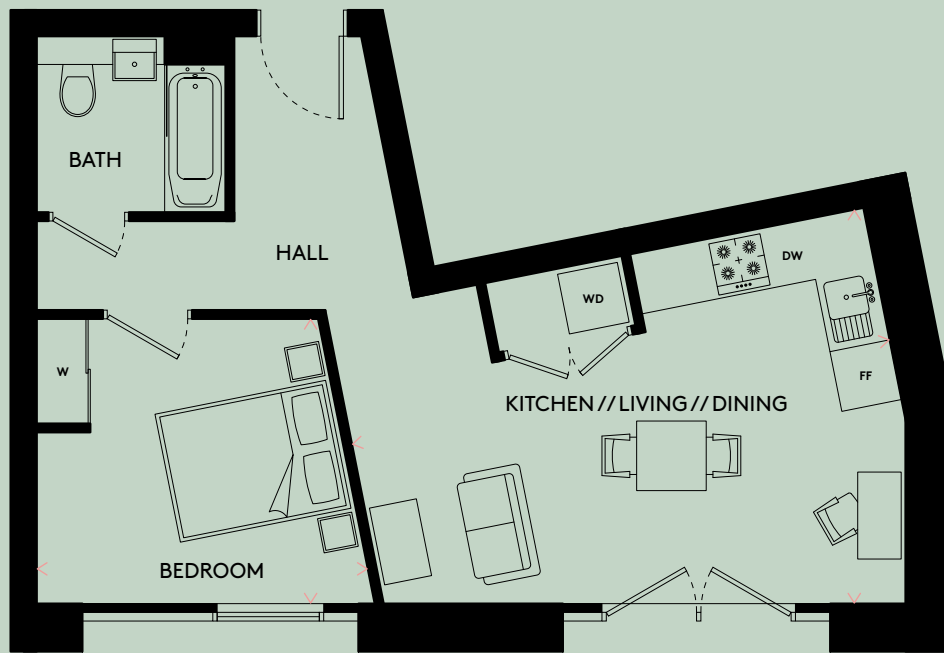
ONE BEDROOM APARTMENT

Type B1

B-02-03 (FLOOR 2) // B-03-03 (FLOOR 3) // B-04-03 (FLOOR 4)
 B-05-03 (FLOOR 5) // B-06-03 (FLOOR 6) // B-07-03 (FLOOR 7) // B-08-03 (FLOOR 8)

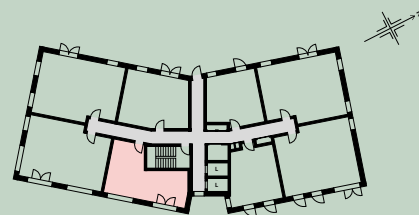
A contemporary one-bedroom apartment with modern living in mind. With a large open plan kitchen, living and dining layout and modern bedroom that offers space and comfort.

- 538 Sqft of living space
- Full height windows and underfloor heating
- Fitted wardrobes to master bedroom
- Siemens and Bosch fitted appliances
- Indoor and outdoor wellbeing and social spaces
- Work and collaboration spaces
- Forthcoming Supermarket and Pharmacy
- Part of the Preston Barracks Regeneration
- Superb transport links to Brighton and the coast



Kitchen // Living // Dining	6.31m x 4.56m	20'8" x 14'11"
Bedroom	3.89m x 3.28m	12'9" x 10'9"
GROSS INTERNAL AREA	50 m²	538 ft²

FF - Fridge Freezer // WD - Washer Dryer // DW - Dishwasher
 W - Wardrobe // ST - Store // L - Lift



1ST - 8TH FLOOR (1ST FLOOR ILLUSTRATED)

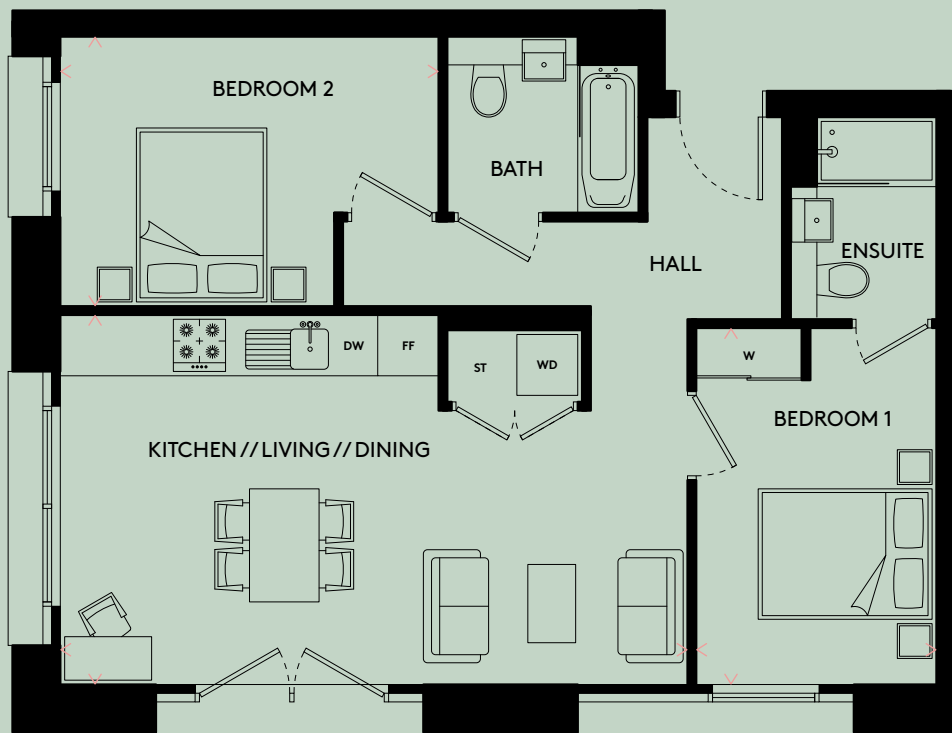
TWO BEDROOM APARTMENT

Type B2

B-02-01 (FLOOR 2) // B-03-01 (FLOOR 3) // B-04-01 (FLOOR 4)
 B-06-01 (FLOOR 6) // B-08-01 (FLOOR 8)

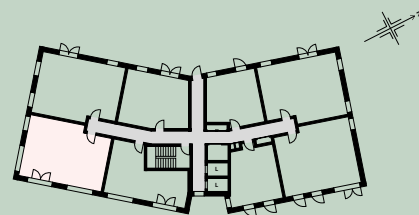
With style and space in mind, this beautiful two bedroom apartment that features an open plan kitchen, living and dining area is the perfect place to call home.

- 770 Sqft of living space
- Full height windows and underfloor heating
- Fitted wardrobes and ensuite to the master bedroom
- Siemens and Bosch fitted appliances
- Indoor and outdoor wellbeing and social spaces
- Work and collaboration spaces
- Forthcoming Supermarket and Pharmacy
- Part of the Preston Barracks Regeneration
- Superb transport links to Brighton and the coast



Kitchen // Living // Dining	7.20m x 4.24m	23'7" x 13'10"
Bedroom 1	4.09m x 2.75m	13'5" x 9'0"
Bedroom 2	4.35m x 3.09m	14'3" x 10'1"
GROSS INTERNAL AREA	71.5 m ²	770 ft ²

FF - Fridge Freezer // WD - Washer Dryer // DW - Dishwasher
 W - Wardrobe // ST - Store // L - Lift



1ST - 8TH FLOOR (1ST FLOOR ILLUSTRATED)

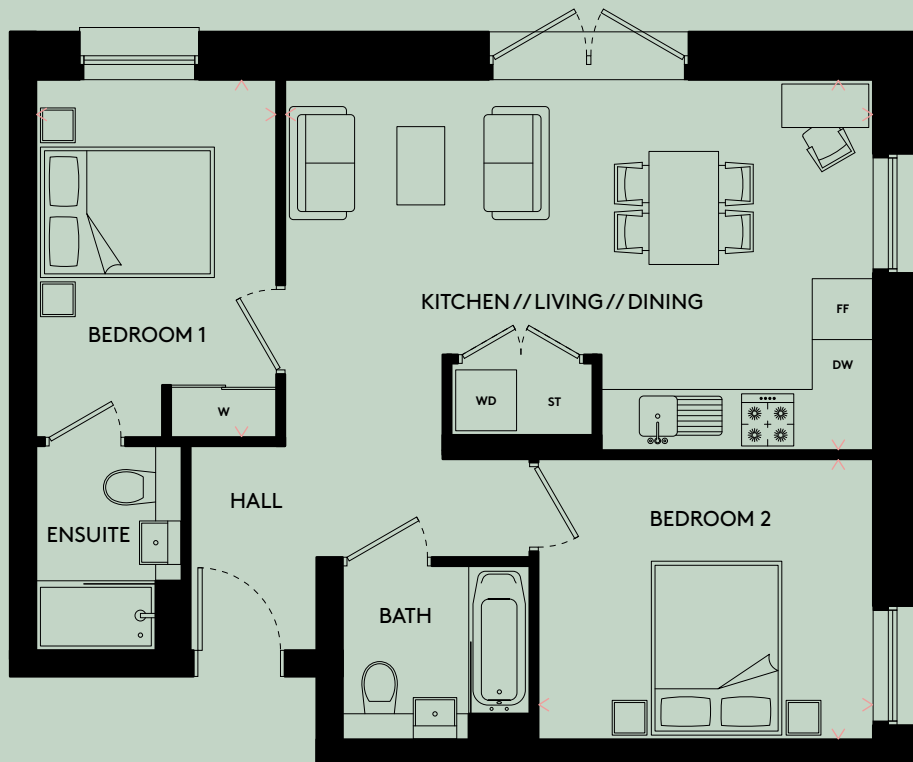
TWO BEDROOM APARTMENT

Type B5

B-02-08 (FLOOR 2) // B-04-08 (FLOOR 4) // B-06-08 (FLOOR 6) // B-08-08 (FLOOR 8)

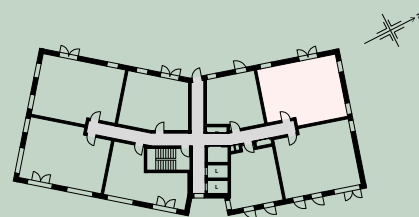
Stylish and modern, this spacious two bedroom apartment features an open plan kitchen, living and dining area with a North-west facing juliet balcony, the perfect welcoming retreat right at home.

- 753 Sqft of living space
- Full height windows and underfloor heating
- North-west facing juliet balcony
- Siemens and Bosch fitted appliances
- Indoor and outdoor wellbeing and social spaces
- Work and collaboration spaces
- Forthcoming Supermarket and Pharmacy
- Part of the Preston Barracks Regeneration
- Superb transport links to Brighton and the coast



Kitchen // Living // Dining	4.26m x 6.76m	13'11" x 22'2"
Bedroom 1	4.10m x 2.75m	13'5" x 9'0"
Bedroom 2	3.84m x 3.25m	12'7" x 10'7"
GROSS INTERNAL AREA	70 m ²	753 ft ²

FF - Fridge Freezer // WD - Washer Dryer // DW - Dishwasher
W - Wardrobe // ST - Store // L - Lift



1ST - 8TH FLOOR (1ST FLOOR ILLUSTRATED)

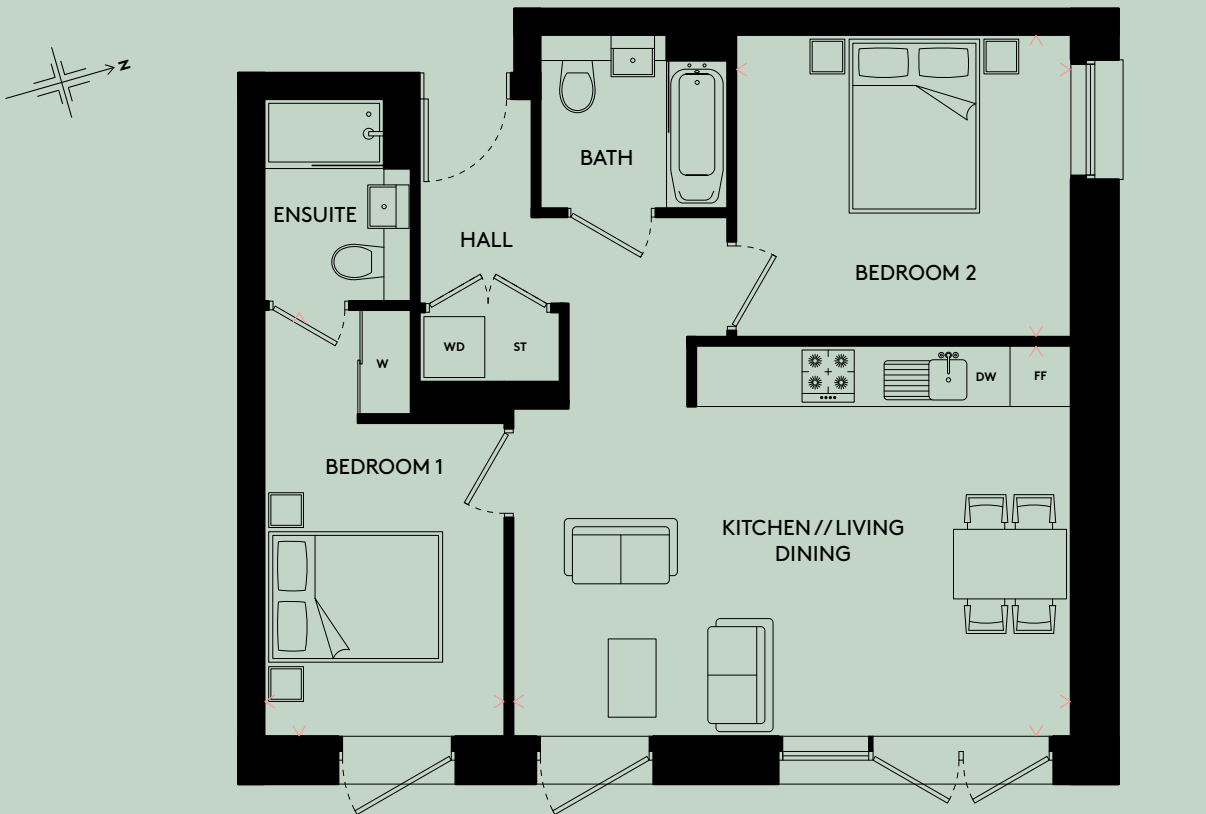
TWO BEDROOM APARTMENT

Type B6

B-03-07 (FLOOR 3) // B-04-07 (FLOOR 4) // B-05-07 (FLOOR 5)
 B-06-07 (FLOOR 6) // B-07-07 (FLOOR 7) // B-08-07 (FLOOR 8)

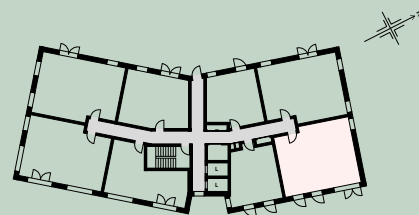
Designed with elegance and spaciousness in mind, this gorgeous two bedroom apartment boasts an open plan kitchen and living area, offering an exquisite living experience.

- 776 Sqft of living space
- Full height windows and underfloor heating
- Multiple East-facing juliet balconies
- Siemens and Bosch fitted appliances
- Indoor and outdoor wellbeing and social spaces
- Work and collaboration spaces
- Forthcoming Supermarket and Pharmacy
- Part of the Preston Barracks Regeneration
- Superb transport links to Brighton and the coast



Kitchen // Living // Dining	4.47m x 6.42m	14'7" x 21'0"
Bedroom 1	4.89m x 2.75m	16'0" x 9'0"
Bedroom 2	3.84m x 3.45m	12'7" x 11'3"
GROSS INTERNAL AREA	72.1 m ²	776 ft ²

FF - Fridge Freezer // WD - Washer Dryer // DW - Dishwasher
 W - Wardrobe // ST - Store // L - Lift



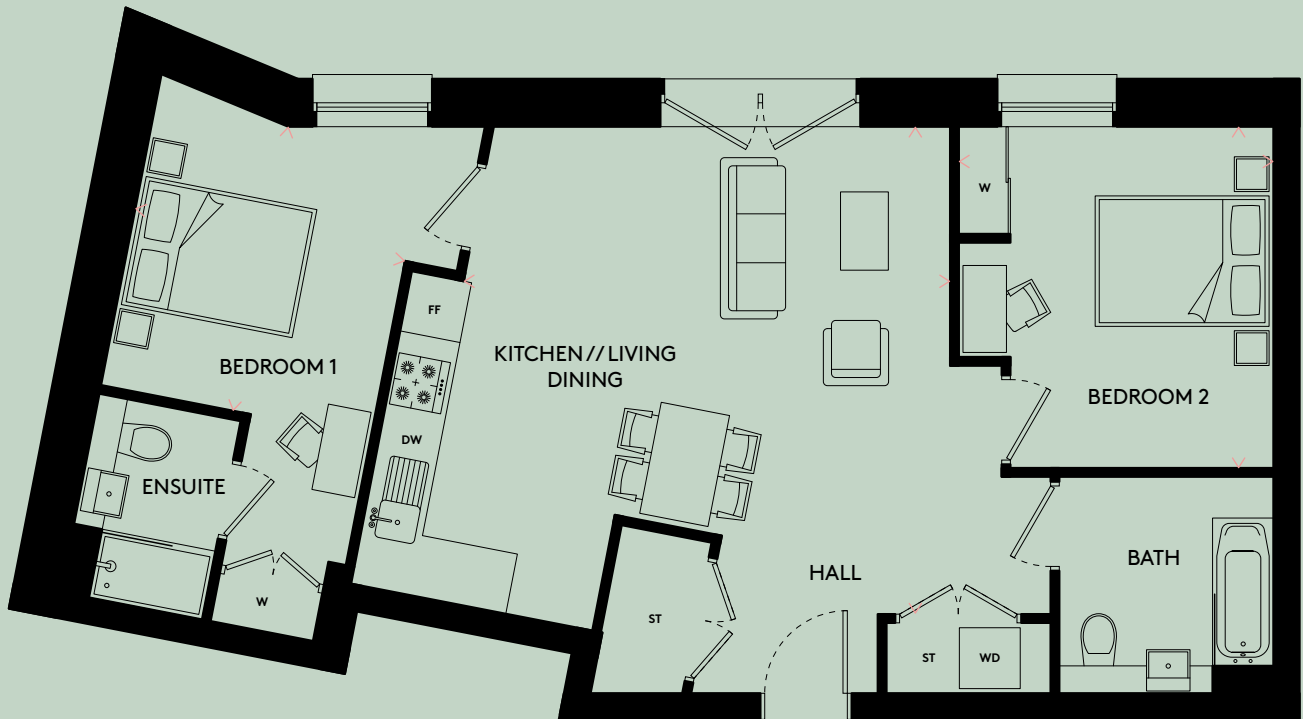
1ST - 8TH FLOOR (1ST FLOOR ILLUSTRATED)

TWO BEDROOM APARTMENT

Type B10
B-09-01 (FLOOR 9)

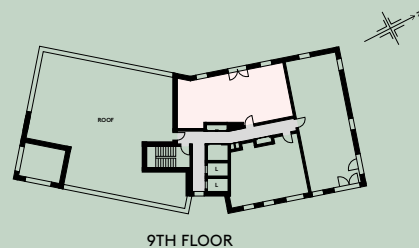
This striking two bedroom apartment has ample space throughout, features an open plan living, kitchen and dining area and two generously sized double bedrooms.

- 891 Sqft of living space
- Full height windows and underfloor heating
- Ample storage space
- Siemens and Bosch fitted appliances
- Indoor and outdoor wellbeing and social spaces
- Work and collaboration spaces
- Forthcoming Supermarket and Pharmacy
- Part of the Preston Barracks Regeneration
- Superb transport links to Brighton and the coast



Kitchen // Living // Dining	5.60m x 5.62m	18'4" x 18'5"
Bedroom 1	3.30m x 3.16m	10'9" x 10'4"
Bedroom 2	3.95m x 3.60m	12'11" x 11'9"
GROSS INTERNAL AREA	82.8 m ²	891 ft ²

FF - Fridge Freezer // WD - Washer Dryer // DW - Dishwasher
W - Wardrobe // ST - Store // L - Lift



9TH FLOOR

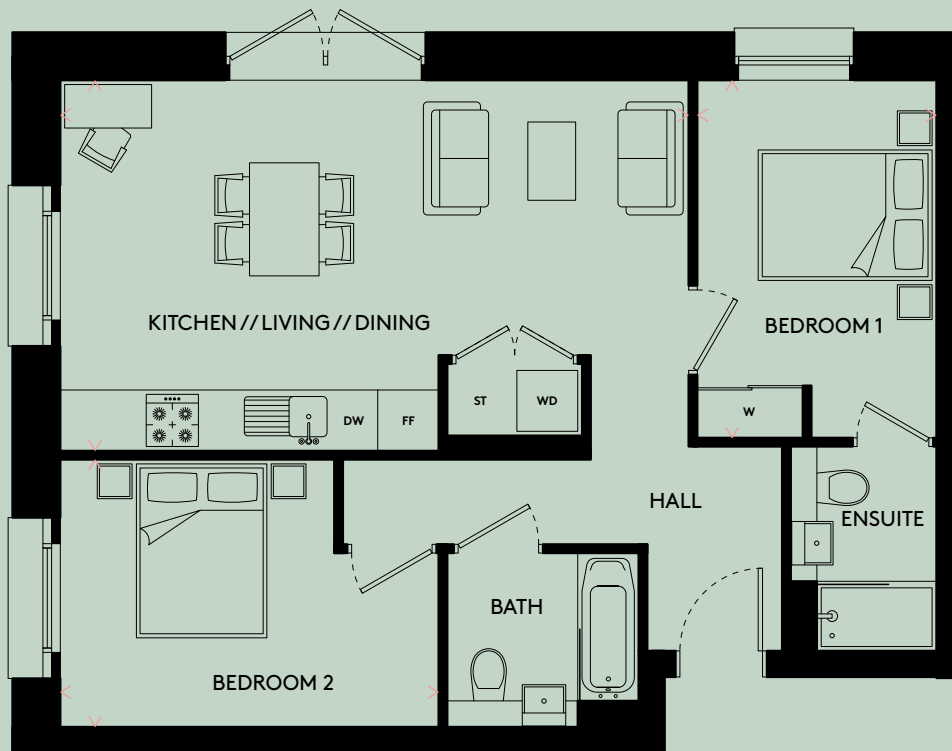
TWO BEDROOM APARTMENT

Type B13

B-02-02 (FLOOR 2) // B-05-02 (FLOOR 5) // B-07-02 (FLOOR 7)

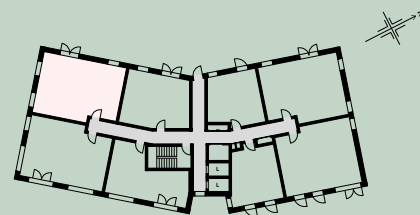
A modern apartment that boasts two large double bedrooms along with an open plan living, kitchen and dining area which leads onto a juliet balcony, perfect for those warm summer nights at home.

- 770 Sqft of living space
- Full height windows and underfloor heating
- Fitted wardrobes and ensuite to the master bedroom
- Siemens and Bosch fitted appliances
- Indoor and outdoor wellbeing and social spaces
- Work and collaboration spaces
- Forthcoming Supermarket and Pharmacy
- Part of the Preston Barracks Regeneration
- Superb transport links to Brighton and the coast



Kitchen // Living // Dining	7.20m x 4.24m	23'7" x 13'10"
Bedroom 1	4.10m x 2.75m	13'5" x 9'0"
Bedroom 2	4.35m x 3.08m	14'3" x 10'1"
GROSS INTERNAL AREA	71.5 m ²	770 ft ²

FF - Fridge Freezer // WD - Washer Dryer // DW - Dishwasher
W - Wardrobe // ST - Store // L - Lift



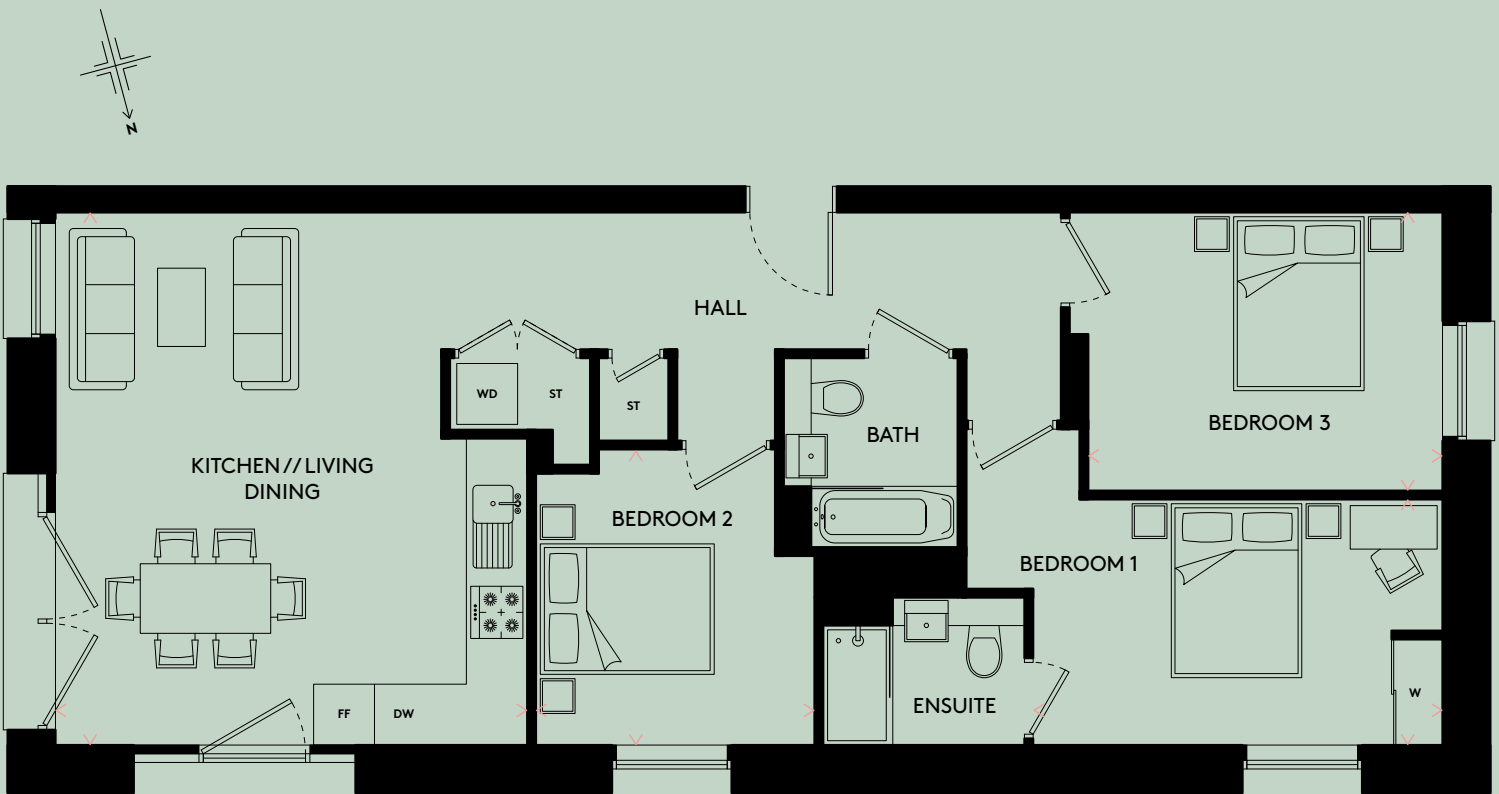
1ST - 8TH FLOOR (1ST FLOOR ILLUSTRATED)

THREE BEDROOM APARTMENT

Type B11
B-09-02 (FLOOR 9)

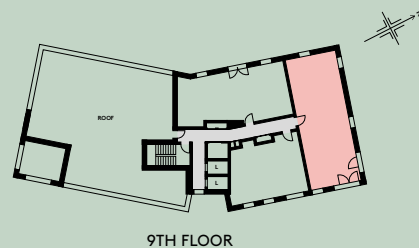
A contemporary three bedroom apartment featuring a large open-plan living, kitchen and dining area with three generously sized double bedrooms.

- 1049 Sqft of living space
- Full height windows and underfloor heating
- 2 spacious juliet balconies on the top floor
- Siemens and Bosch fitted appliances
- Indoor and outdoor wellbeing and social spaces
- Work and collaboration spaces
- Forthcoming Supermarket and Pharmacy
- Part of the Preston Barracks Regeneration
- Superb transport links to Brighton and the coast



Kitchen // Living // Dining	5.40m x 6.11m	17'8" x 20'0"
Bedroom 1	4.72m x 2.82m	15'5" x 9'3"
Bedroom 2	4.08m x 3.19m	13'4" x 10'5"
Bedroom 3	3.39m x 3.22m	11'1" x 10'6"
GROSS INTERNAL AREA	97.5 m ²	1049 ft ²

FF - Fridge Freezer // WD - Washer Dryer // DW - Dishwasher
W - Wardrobe // ST - Store // L - Lift



9TH FLOOR